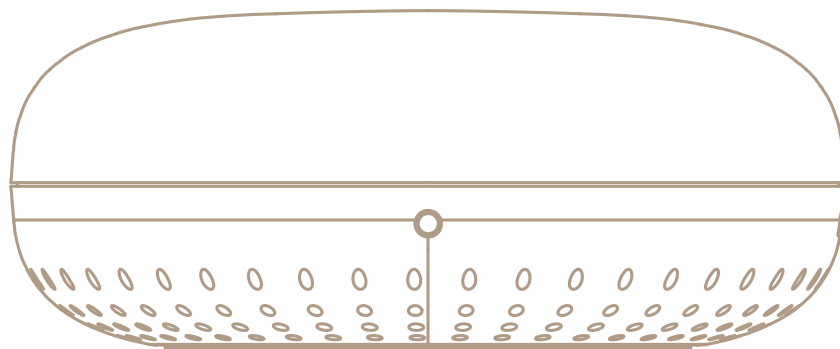
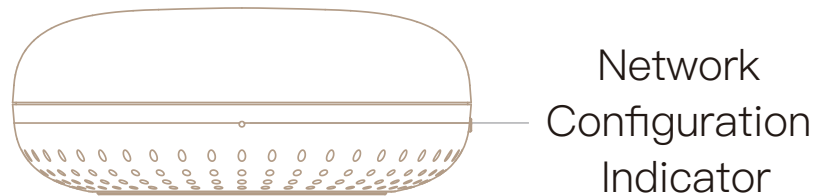
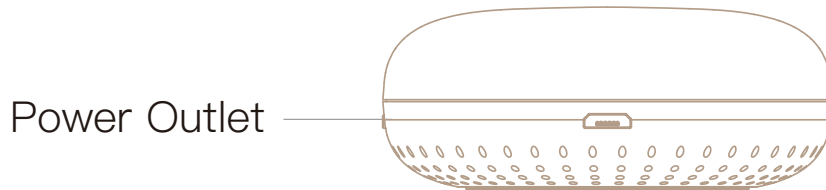
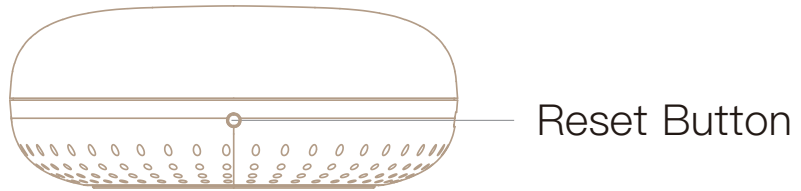


# WiFi Smart Remote IR Controller



English





## Preparation for Use

- ① Download MOES App on App store or scan the QR code



MOES App is upgraded as much more compatibility than Tuya Smart/Smart Life App, functional well for scene controlled by Siri, widget and scene recommendations as the fully new customized service. (**Note:** Tuya Smart/Smart Life App still works, but MOES App is highly recommended)

## ② Registration or Log in.

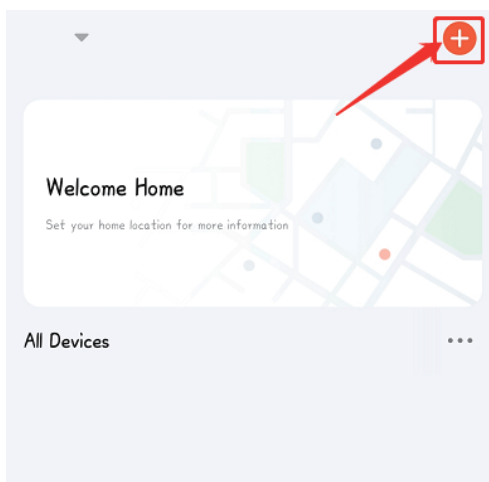


- Download “MOES” Application.
- Enter the Register/Login interface; tap “Register” to create an account by entering your phone number to get verification code and “Set password”. Choose “Log in” if you already have a MOES account.

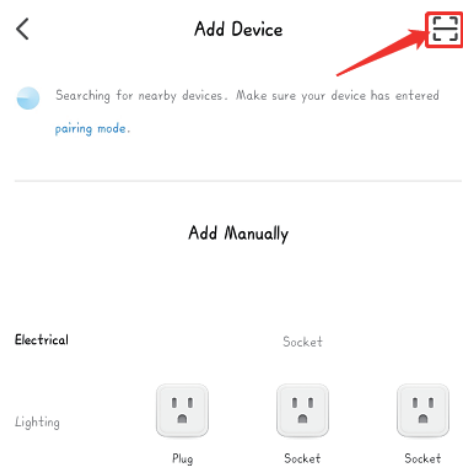
## Add Device

### Method One:

Scan the QR code to configure the network guide.



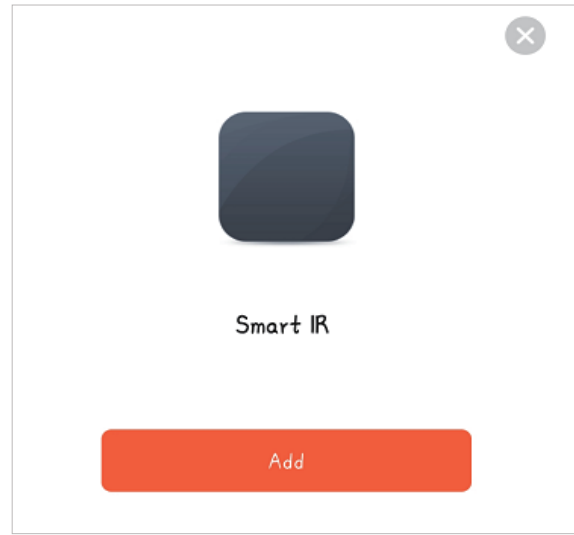
①



②



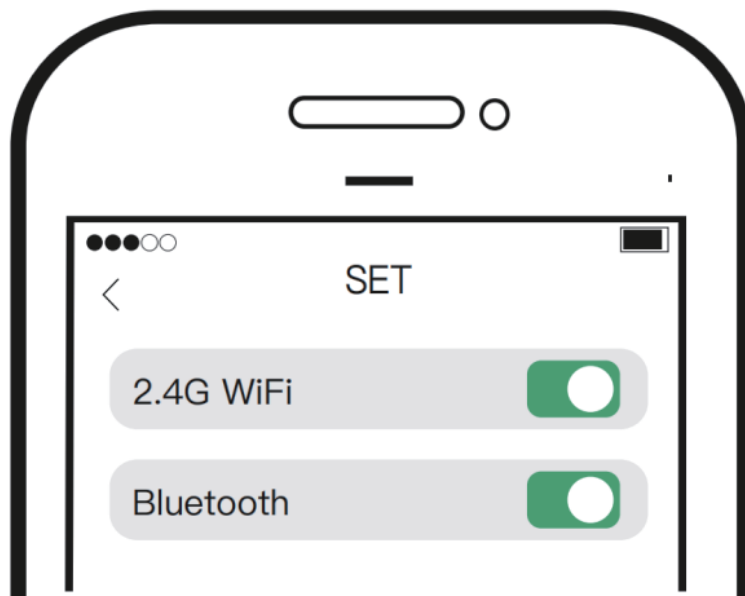
Scan this QR code



③

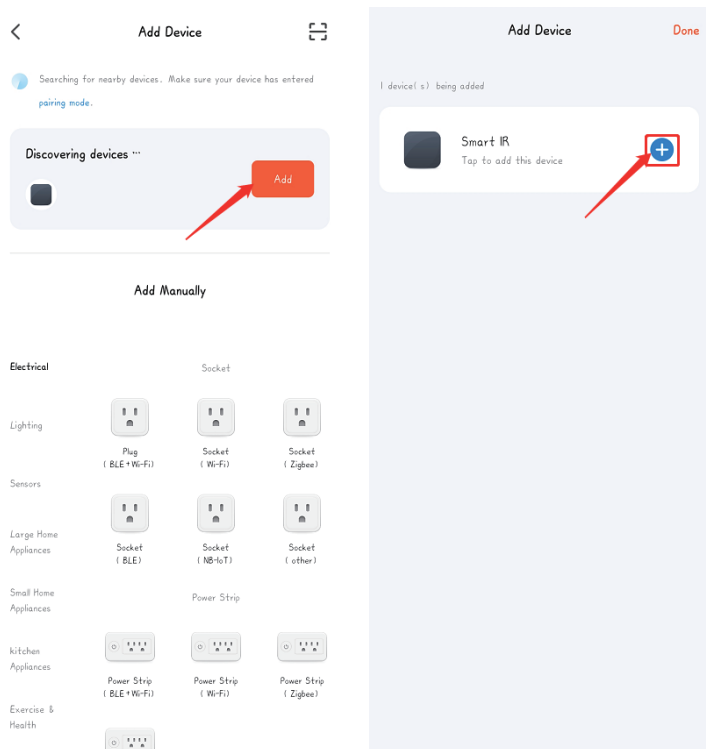
### Method Two:

1. Make sure your phone is connected to Wi-Fi and Bluetooth.

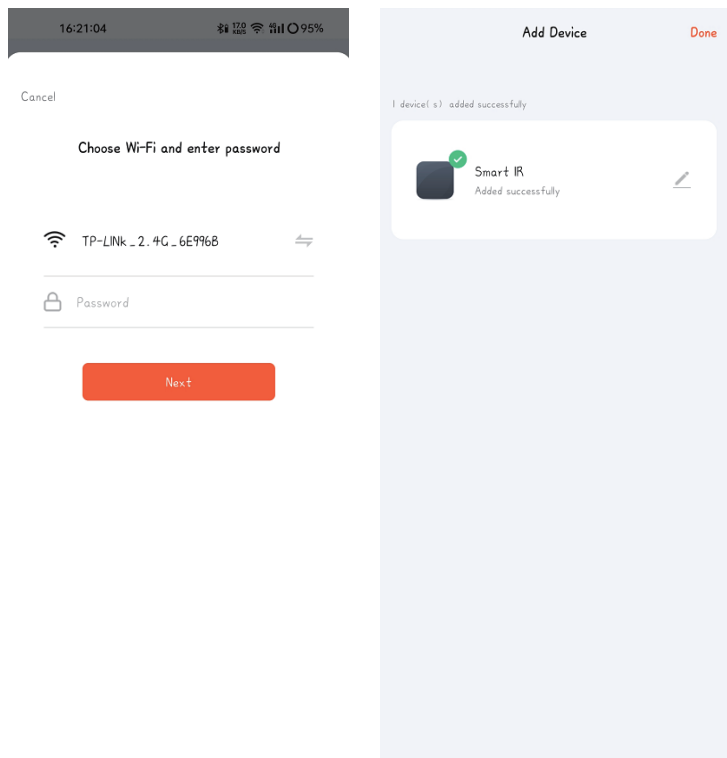


2. Reset: Press and hold the reset button for at least 5 seconds until the network configuration indicator blinks.

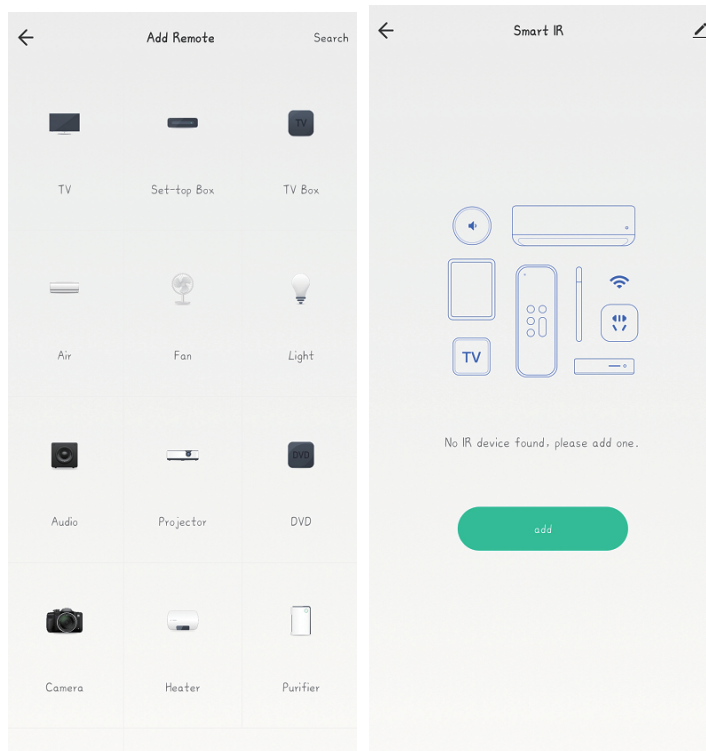
3. Open MOES App, then the prompt page will automatically show on the screen. Click “Add”, Select the device you want to add and click “+”.



4. Enter Wi-Fi Password and click “Next”, waiting for completing the connection. Add the device successfully, you can edit the name of the device to enter the device page by click “Done”.



5.enjoy your smart life with home automation.



## Add Remote Control

Choose your existing appliance and add remote , such as Air conditioner, TV,STB, TV box, FAN (support more than 4000+main brand).

You can also choose “Copy button” function to learn if some of the appliance cannot be controlled.

## Copy Button Operation

If you cannot find the remote which is able to control appliance, you can learn the function through copy button.(Notice: Currently copy button function only support TV / STB /TV BOX / FAN, exclude Air conditioner)

**Step 1:** Click to enter the connected device

**Step 2:** Click the edit button in the upper right corner

**Step 3:** Select “Copy button” in the popup menu bar

**Step 4:** Click the on/off button

**Step 5:** Press your original remote button, APP will redirect to next step automatically.

**Step 6:** Finish copying one button, you should press the related button on APP to check if works fine.

**You may continuously choose to copy more or press the up right corner “Done” to save.**

## DIY OPERATION

If you can't find your IR appliance in existed appliance form, you may ask DIY function for help.

**Step 1:** Click the DIY button.

**Step 2:** Click “next step”.

**Step 3:** Press your original remote button, APP will redirect to next step automatically.

**Step 4:** Rechristen.

**Step 5:** Save settings.

**If need to change or add more button, you can choose up right corner “Edit” button for help.**

## NOTICE

1: Support learning of 38K carrier frequency, if you cannot receive instruction from original remote, the main reason maybe mismatching of carrier frequency. In this case, you cannot learn the instruction from original remote.

2: Insure MOES SMART IR receive instruction regularly, please do not long press original remote to give instruction, a short press should be enough.

## Set your Echo speaker by Alexa APP

1.If you have finished to install MOES then open Amazon Alexa App: sign in your Alexa account and enter password.

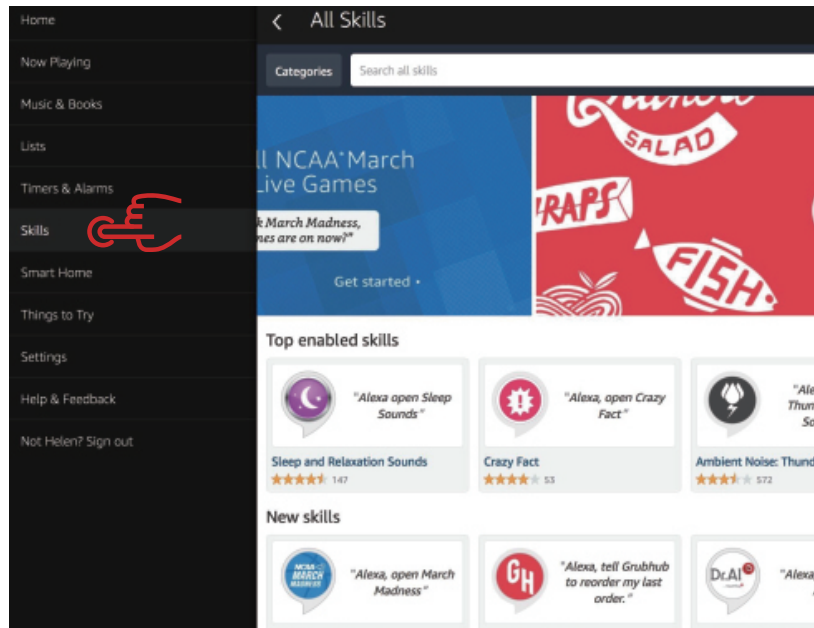
2.Click the menu on the left corner–click “Settings: choose “Set up a new device”(choose a device ,like Echo)Note: When the below page appears, long press the small dot on your Echo device until the light turns to yellow. Then Click Continue on App

**Note: at this moment, the mobile phone cannot open a variety of VPN software.**

Choose your own WiFi and wait for a few minutes. After an introduction video, click next step, it will enter Home page automatically. Now the Echo had connected to Wi-Fi successfully.



# Enable MOES Skill in Alexa App



- Step 1:** Choose “Skill” in the option bar, and then search “MOES” in the input box.
- Step 2:** Select MOES in the search results, and then click “Enable Skill”.
- Step 3:** Then input the user name and password of MOES APP that you had previously registered.

## Control the device by voice

After the above operation is successful, you can control the device via Echo.

### 1: Discover Device

Firstly, you need to say to the Echo:

Echo (or Alexa), discover my devices.

Echo will start to find the device which is added in the MOES APP.

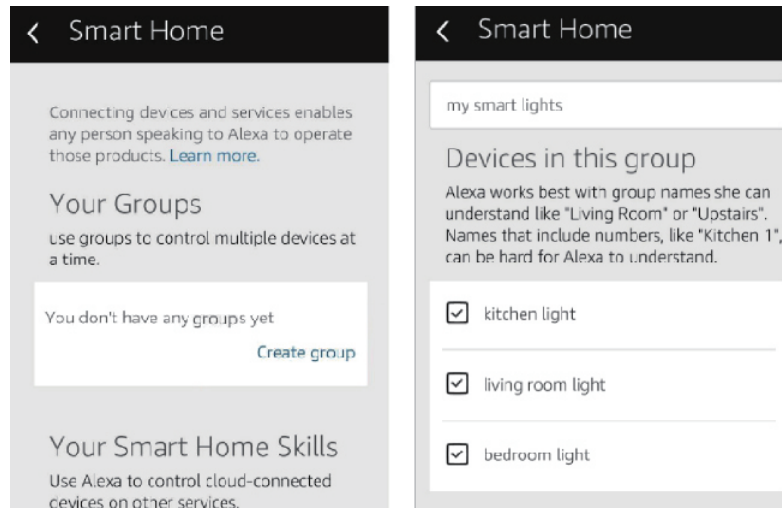
It will take about 20 seconds, then Echo will tell you the result.

You can also click “Discover devices” in Alexa APP, then it will show the devices that have been found successfully .

## 2: Control Device by Voice

Note: The name of the device must be consistent with the addition of MOES.

You can also group the device and give instructions to control them together.



**Note:** Echo is one of the wake –up names, which can be any of the three names (Settings) Alexa, Echo, Amazon.

## 3: Support Skill List

You can control the devices by instructions like these:

Alexa(or Echo), turn on the Devices

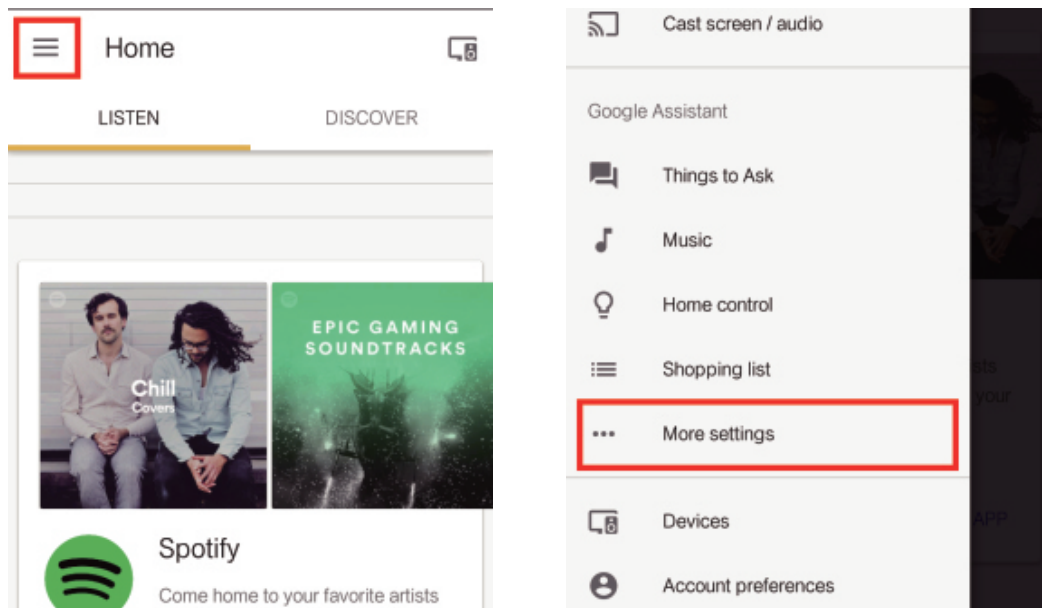
Alexa(or Echo), turn off the Devices.

## Google Assistant –Activate Smart Life in Google Home App

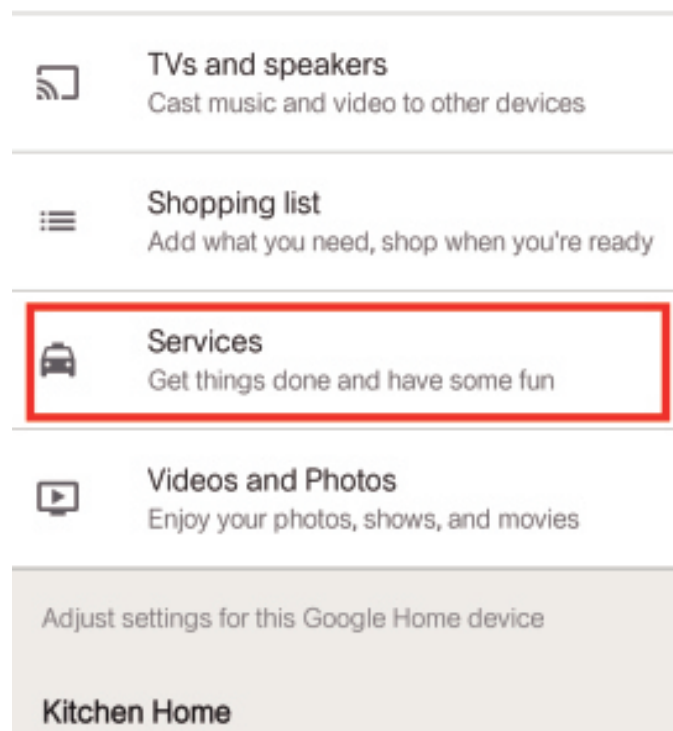
### Preparation

- Have downloaded the Google Home App–compatible With An–droid(4.2 or higher) or ISO(8.0 or higher) smartphones or tablet.
- Have registered your google Account.
- Have paired Device with MOES and named it with a recognizable name.
- Have finished setting up Google Home

**Step 1:** Open Google Home App; tap (☰) on the upper left corner; select “More Settings” to enter the next interface.



**Step 2:** Choose “Services” in the options bar and select “MOES” to enter the next interface.



**Step 3:** Tap “ MOES ”, then sign in your smart Life Account.

**Step 4:** Tap “Link Now”, after your MOES account had linked to Google Assistant, the smart devices will automatically appear.

## Command the Device through Your Voice.

Firstly ,you need to say “OK Google, talk to MOES” to wake up the MOES. Then you can control the device by instructions like these:  
Turn on the/Turn off the

**Note:** After MOES has been wakened up, you may say “Cancel ”or “Stop” to exit MOES or say “Nothing” when you hear “what can I do for you ”. Then you can say “OK Google, talk to MOES” to start voice control.

## Voice Control Instruct

<b>Device</b>	Alexa command list
<b>AC</b>	Alexa, turn on 'device name' Alexa, turn off 'device name' Alexa, set 'device name' temperature to ** degrees Alexa, increase 'device name' temperature Alexa, decrease 'device name' temperature
<b>STP</b>	Alexa, turn on 'device name' Alexa, turn off 'device name' Alexa, channel up on 'device name' Alexa, channel down on 'device name' Alexa, volume up/down 'device name' Alexa, change channel of 'device name' to 'channel number'
<b>TV</b>	same as STP
<b>Device</b>	Google Home command list
<b>AC</b>	Hi google, turn on/turn off the 'device name' Hi google, set 'device name' temperature to ** degrees Hi google, make 'device name' warmer/cooler
<b>STP</b>	Hi google, turn on/turn off the 'device name'
<b>TV</b>	Hi google, turn on/turn off the 'device name'

<p>Q: Built-in Battery included?  A: No built-in battery, need connect with power directly (USB Line only);</p>
<p>Q: 5G wifi supportable?  A: Only support 2.4G wifi, no 5G wifi acceptable</p>
<p>Q: Is this IR universal works with internal code library?  A: Code library keeps in cloud, you must connect with internet</p>
<p>Q: Appliance compatible?  A: Support majority leading top brand include TV /STP /AC/DVD</p>
<p>Q: Brand Applicable?  A: Please check brand list in App</p>
<p>Q: Smart Device compatible?  A: Google Alexa, ECHO</p>
<p>Q: Can they go through-wall or control AC from up stair or down stair?  A: No, Infrared cannot go through-wall</p>
<p>Q: Is this device work with WIFI? Must they use with smart gateway?  A: MOES Smart IR work completely with WIFI control, no smart gateway required</p>
<p>Q: How many home appliances can MOES Smart IR control at the same time?  A: MOES Smart IR can control multiple appliances in one room through "MOES" APP;</p>
<p>Q: What is the scope can MOES Smart IR works?  A: Within Diameter 16 meters.</p>
<p>Q: How to use MOES Smart IR learning function?  A: Please check copy button instruction.</p>

## Trouble Shooting Guide

Why Moes'S Smart Universal Remote can't control the appliance?

- Step 1:** Make sure if the network works well in Smart IR (Touch any button on the smart app remote side, if the indicator light works fine ,then network ok )
- Step 2:** Check if there is obstacle between remote and appliance, within 8 meters
- Step 3:** Confirm if the original remote control is Infrared control (Press the remote control after warding off the remote control head with hand or other object, if appliance do not work, it's Infrared control. If not work, it should be Blue-tooth or radio frequency control)

## SERVICE

Thank you for your trust and support to our products, we will provide you with a two-year worry-free after-sales service (freight is not included), please do not alter this warranty service card, to safeguard your legitimate rights and interests. If you need service or have any questions, please consult the distributor or contact us.

Product quality problems occur within 24 months from the date of receipt, please prepare the product and the packaging, applying for after-sales maintenance in the site or store where you purchase; If the product is damaged due to personal reasons, a certain amount of maintenance fee shall be charged for repair.

We have the right to refuse to provide warranty service if:

1. Products with damaged appearance, missing LOGO or beyond the service term
2. Products that are disassembled, injured, privately repaired, modified or have missing parts
3. The circuit is burned or the data cable or power interface is damaged
4. Products damaged by foreign matter intrusion (including but not limited to various forms of fluid, sand, dust, soot, etc.)

## RECYCLING INFORMATION

All products marked with the symbol for separate collection of waste electrical and electronic equipment (WEEE Directive 2012/19 / EU) must be disposed of separately from unsorted municipal waste. To protect your health and the environment, this equipment must be disposed of at designated collection points for electrical and electronic equipment designated by the government or local authorities. Correct disposal and recycling will help prevent potential negative consequences for the environment and human health. To find out where these collection points are and how they work, contact the installer or your local authority.



# WARRANTY CARD

## Product Information

Product Name \_\_\_\_\_

Product Type \_\_\_\_\_

Purchase Date \_\_\_\_\_

Warranty Period \_\_\_\_\_

Dealer Information \_\_\_\_\_

Customer's Name \_\_\_\_\_

Customer Phone \_\_\_\_\_

Customer Address \_\_\_\_\_

## Maintenance Records

Failure date	Cause Of Issue	Fault Content	Principal

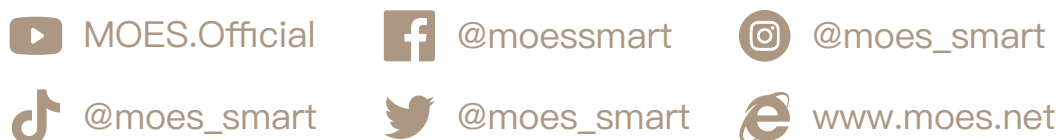


Thank you for your support and purchase at we Moes, we are always here for your complete satisfaction, just feel free to share your great shopping experience with us.



If you have any other need, please do not hesitate to contact us first, we will try to meet your demand.

## FOLLOW US



### EVATOST CONSULTING LTD

Address: Suite 11, First Floor, Moy Road Business Centre, Taffs Well, Cardiff, Wales, CF15 7QR  
Tel: +44-292-1680945  
Email: [contact@evatmaster.com](mailto:contact@evatmaster.com)

### AMZLAB GmbH

Laubenhof 23, 45326 Essen  
Made In China



### Manufacturer:

#### WENZHOU NOVA NEW ENERGY CO.,LTD

Address: Power Science and Technology Innovation Center, NO.238, Wei 11 Road, Yueqing Economic Development Zone, Yueqing, Zhejiang, China

Tel: +86-577-57186815

After-sale Service: [service@moeshouse.com](mailto:service@moeshouse.com)

